

# Greetings from Weber School!

*Striving for Success. Learning. Respect*

Phone: 06 374 3809

Email: [office@weber.school.nz](mailto:office@weber.school.nz)

Website: [www.weber.school.nz](http://www.weber.school.nz)

Facebook: [Weber School](https://www.facebook.com/WeberSchool)

## Good morning...Morena.... Hello!

I hope you have all had a wonderful weekend! The weather should continue to be warm this week so thank goodness for our air con!

We had another great week and the students have been busy learning about the expectations in their class and building positive learning environments. This is essential at the beginning of the year, as we aim to start how we mean to go on.

CONGRATULATIONS to our Weber School Senior Leaders 2020. Motea House



Captains: Georgina Donald & Charlie Kjestrup,  
Wimbledon House: Holly Henricksen & Craig Elliffe,  
Waione House: Bridget Thompson & Henry Leipst,  
Horoeka House: Fergus Prouting & Madison Small,  
Sports Captains: James Joblin & Archie Riddell.  
Bus monitors: Georgina Donald, Anahera Whakataka-Tutauha, Tom James, Bella Harold and Charlie Kjestrup.

We will begin delving into our rich learning unit this week. Thank you to those who have given us people to contact... please keep them coming in! Also if anyone has spare sacks, twine, old groundsheet, bamboo sticks or wooden rods... it would be greatly appreciated by tomorrow.

A fair few housekeeping items this week... thank you for your time!

- Swimming – all students should be bringing togs and swimming each day unless we have been contacted by parents. Swimming is a curriculum area that we are required to teach and is not option. We appreciate your support and communication.
- Bus arrangements. Thank you to all those already letting us know your bus arrangements and of any changes. It makes the afternoon bus lines much easier to organise. Our bus monitors will be assisting teachers each day, and have already participated in some training with Constable Max.
- Emergency contacts – please let us know of any changes to your child's emergency contacts, updated medical conditions or your

## IMPORTANT DATES Term One

17<sup>th</sup> February -  
BOT meeting.  
5pm

4-5 March  
Parent Teacher  
Conferences

11 March  
Weber  
Swimming – at  
Wai Splash

18<sup>th</sup> March –  
Weet-bix  
Tryathlon

19<sup>th</sup> EPRO 8  
(Selected seniors  
only)

23<sup>rd</sup> March  
Country School  
Swimming

26<sup>th</sup> March  
Interschool  
Swimming

**30<sup>th</sup> March**  
**TEACHER ONLY**  
**DAY**

9<sup>th</sup> April – End of  
term (Thursday)



own contact details. This assists us in the case of an emergency.

- Parents- please ensure the gates are closed when entering and exiting the school.
- School parking – all cars should be parked in the hall car park for pick-ups and drop offs.
- Uniforms – hats are essential, no hat = no play in the sun.
- Please can all uniform and hats be clearly named. With swimming there are ample opportunities for mix ups!

Have a wonderful week, we are looking forward to another great one!

### BUS ROUTES CHARGES

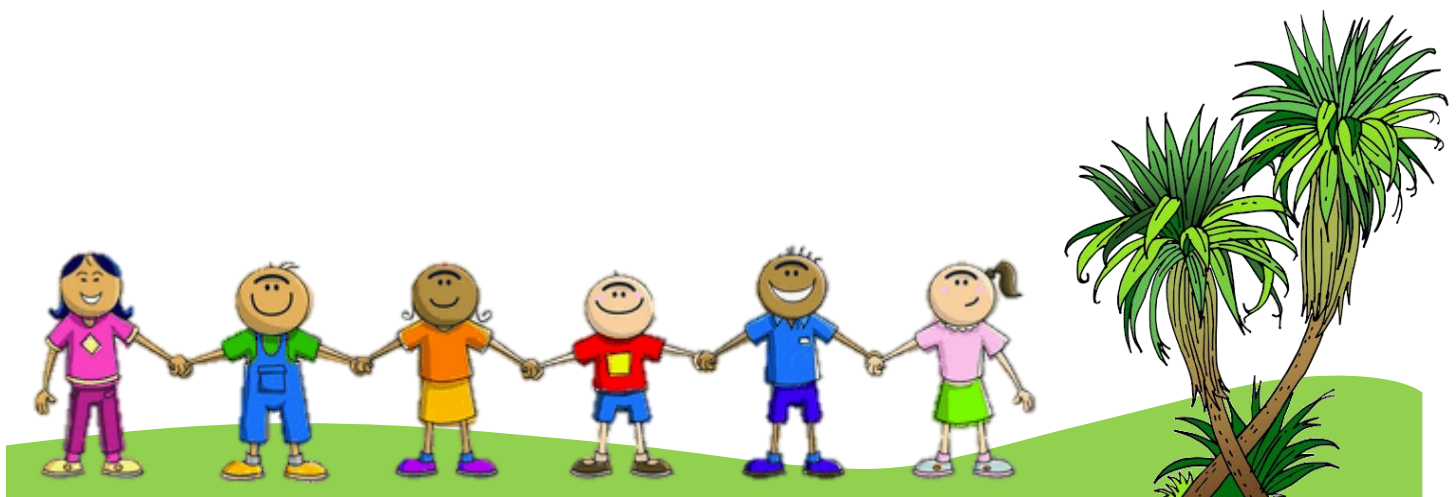
There have been several queries about the 'Weber zone' and the bus charges. All schools with buses have a transport eligibility zone (TEZ). This is based on students attending the closest school, living more than 3.2km from school and having no access to public transport. More information can be found at <https://www.education.govt.nz/school/property-and-transport/transport/sta-eligibility/>

If children are not eligible then the bus company can require payment for the service. We have been incredibly fortunate that up until now, we have not been required to. For our affected students, when the system is set up, books of tickets will be available for purchase from the school at a cost of \$16 per child for 10 trips.

At this stage, we do not have the tickets or the system organised. Once we do, we will let you know. I realise that this is new, and it could be very costly which is why I am putting information out as I get it. It is not a school decision but please do continue to contact me if you have any questions.

### WEETBIX TRYATHLON

The Palmerston North Weetbix Tryathlon is on March 18<sup>th</sup> at Ongley Park. This is not a school event, however we are supportive of students entering. Weber School has been registered. Please let the school know if you are taking your child/children as we will mark the roll accordingly.



## COMMUNITY



Good Morning all

Weber School has been given an opportunity to be able to cater for the Beef & Lamb Resilience Workshop on Wednesday the 26th of February 2020, held at the Pongaroa Hall, approximately 20-30 people.

They have suggested a light lunch which consists of a:

- A filled roll/sandwich
- A couple pieces of baking
- And possibly some savouries/sausage rolls

If we could possibly get donations towards this small catering job, it would mean more profit for our school. And could we please have **EVERYTHING TO THE HALL FRIDGE OR BENCH ON THE TUESDAY THE 25TH PLEASE IF NOT BEFORE, WOULD BE MUCH APPRECIATED.**

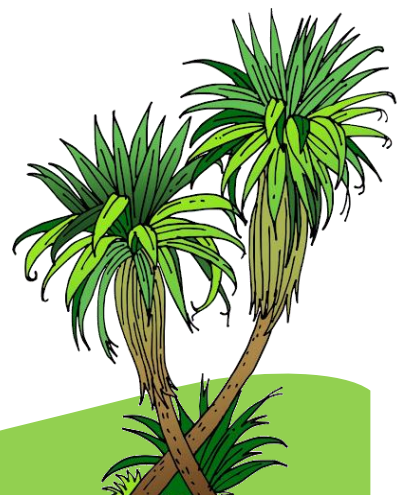
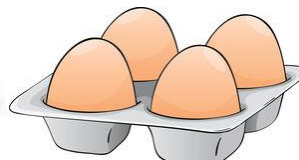
A list of items that we would appreciate is listed in the link below. Please add your name beside what you can bring.

<https://docs.google.com/document/d/1iITn1SnpxxwK34NKv3Wb0wfWWUg6eDDFz6x6sSLtEg/e/dit?usp=sharing>

If you have any problems at all getting any of the items to the school, I will be coming from town on Tuesday night and am happy enough to call in and pick up the items, ready to package to go thru to Pongaroa the next day.

My contact number is 063743645 or email me on [mpickering@weber.school.nz](mailto:mpickering@weber.school.nz)

Thank you very much  
Miff Pickering & Trudy Hales



## COMMUNITY

### Super Star Cricket 2020 – Dannevirke STARTS WEEK COMMENCING 10 FEB!

Super Star Cricket is the introductory programme for cricket for 5 - 12 years olds in our region.

The programme is delivered with a slight difference to accommodate different regional requirements. E.G. in Palmerston North Super Star Cricket is for 5-8 year olds and in Bush & Dannevirke it is 5-12 to accommodate the reactivation of cricket in those areas.

Super Star Cricket in Term 1 is \$60 for new entrants and \$30 for returning SCA players. New entrants receive 6 weeks of coaching and a cool NZC prize pack which includes a bat and a bag and other goodies!

To register for each programme, you can follow the links below. Payment can be made either via credit card or bank transfer. Please remember to keep your registration code for your reference.

#### DANNEVIRKE CRICKET REACTIVATION

SUPER STAR REGISTRATIONS – \$20 - Thursday Nights - 515pm - 615pm.

<https://registrations.cricha.com/register/280882>

(please note for term 1 re-activation in Dannevirke is at a reduced price due to reduced administration costs from that partnership.)



**Junior Hockey AGM**

**Tuesday 11th February**  
**6.30pm**  
**Mangatera Hotel Dannevirke**

**All welcome - come and find out**  
**about our fantastic Term 2**  
**tournament!**

For more info contact: [dscjuniorhockey@gmail.com](mailto:dscjuniorhockey@gmail.com)  
 or check out our Facebook page