

Intelligent Learning In A Caring Environment

Greetings from Weber School!

Striving for Success, *Team Player*, *Active Learner*, *Respect*

Phone: 06 374 3809

Email: office@weber.school.nz

Website: www.weber.school.nz

Facebook: [Weber School](https://www.facebook.com/WeberSchool)

Ahakoā he iti, he pounamu
Although it is small, it is precious

Good morning...Morena....Hello!

WELCOME TO WEEK 2

It was a real pleasure last week to be a part of such a vibrant school. The pupils here truly are gorgeous and so polite! As I've been walking around the playground I have noticed such a friendly and nurturing way about Weber tamariki. They are always looking out for one another and are so conscientious in making sure that someone who is upset is taken care of.

The children are taking advantage of the lovely weather and even when the rain came a little on Friday it did not deter them from playing outside.

You'll notice I have added a whakatauki at the top of these notices. Each week this term we will align our PB4L values with a whakatauki (Maori proverb, saying). While each week's values are being decided on I have chosen this one for this week as I believe it best fits how we feel about Weber School, its students, staff and its community.

BELL TIMES

Students have adapted well to the change in bell times. If anything it was the adults who needed to remember! Feedback from students is that the day seems to go faster and they are getting so much more work done.

Just to recap:

Monday to Friday

8.55	Signal bell
9-10.30	Session One
10.30-11.00	Interval
11.00-1.00	Session Two
1.00 -1.45	Lunch
1.45	Signal whistle
1.50-3.00	Session Three

IMPORTANT DATES Term Two

Mondays
Technology Yrs 7 & 8

Tuesdays
Guitar

Wednesdays
RE every 2nd week

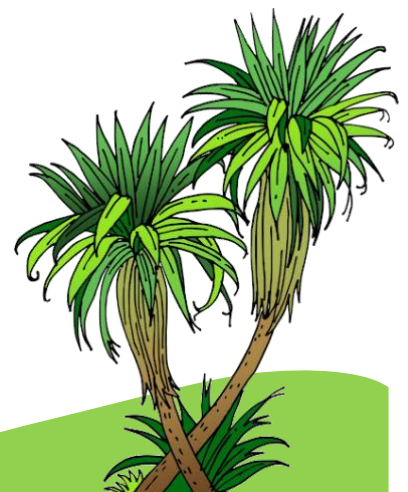
Fridays
Library
Kapa Haka

BOT Meeting
27 May

Weber School
Cross Country
2nd June

7 June
Queen's
Birthday

Interschool
Cross Country
16 June
Weber Hosting



FUNDRAISING

Congratulations to the fundraising team!!! The auction raised \$15600.00 for Weber School. This is just outstanding and is testament to the hard work and dedication of the fundraisers who put this together – the hours spent gathering auction items and then more hours of uploading onto the 32 Auctions platform must be acknowledged – not to mention the hope that the auction will be well supported after all that effort. And it was, and it was fun. There's nothing like a bit of competition knowing the proceeds were going to a wonderful cause – our children.

On behalf of Weber School I would like to thank everyone involved in the auction and that includes the community of bidders willing to get involved to support this effort.

AFTER SCHOOL TRAVEL ARRANGEMENTS & WINTER SPORT

With winter sport starting there will be a lot of changes to families' travel arrangements. Last Friday was a good example with children needing to get to town for hockey. Please call the office or email Mrs Cottle and let her know if your child/ren are needing to change their usual travel arrangements in order to get to sports practices and/or games.

CROSS COUNTRY

Cross country is this term in mid June we are hosting the interschool event. Classes will be out practising in the days leading up to our own school event which is likely to be at the end of May.

KAI WARMERS

Kai warmers are very popular with the students. Please wrap your child's lunch in tin foil or baking paper and pop their name on it in clear writing. Please ensure your child's food is cooked thoroughly before sending along for the kai warmer. The ovens are turned on to warm rather than cook.

Have a wonderful week everyone

Chrissina Loader
Acting Principal



Striving for success



Team Player



Active Learner



Respectful

