



Rāpare 9th Hakihea 2021

Greetings from Weber School!

Striving for Success, Team Player, Active Learner, Respectful

Phone: 06 374 3809

Email: office@weber.school.nz

Website: www.weber.school.nz

Facebook: [Weber School](https://www.facebook.com/WeberSchool)

Tena koutou kātōa Weber whanau,

The final week of the school year is here and the holidays are almost upon us. I would like to take this opportunity to thank all our parent volunteers this year who have helped with events, fund-raising, offering to go to camp, transport etc. I appreciate the latter half of the year has meant we haven't had parents onsite, however I want to recognise the time and effort of the volunteers as the year draws to an end. We look forward to welcoming the community onsite in 2022.



A special thank you to Miffy Pickering who is finishing up with library and kapa haka this year. We thank her for her time and invaluable expertise in both these areas, we will miss her smiley face around the school.

With regard to class structure for 2022 the classes are to remain the same, so students will stay in the same class as of now. Next year Janet Tolley is going to be working four days a week. At this point in time, I am still finalising the staffing for Room 2 and for the extra day in Room 1. I understand that this is not ideal as soon as I know I will notify the community. Thank you for your understanding in this matter.

This year class photos were disrupted, so instead we have taken a class photo outside on the playground, the class photos will be emailed out to families. This is a small token of our sincere thanks and appreciation for all of your support during the covid protocols over the past two terms. The school has been working brilliantly on the PB4L focus of manaakitanga and we are looking forward to our fun day next week. Great work Weber!

**Please note we finish at 1pm on the last day - Wednesday 15 December.
Buses will be running at this time.**



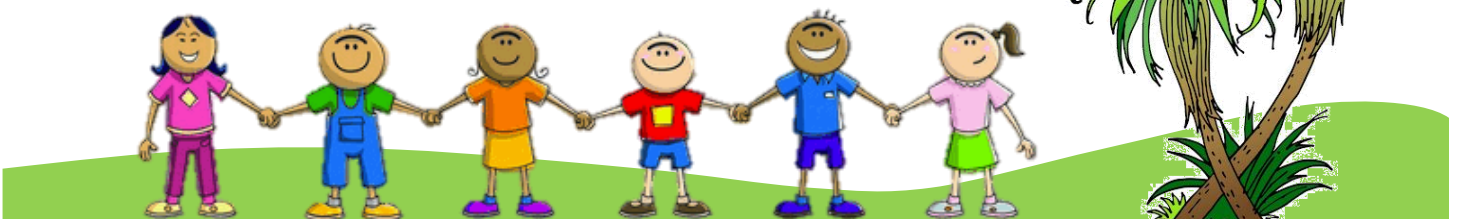
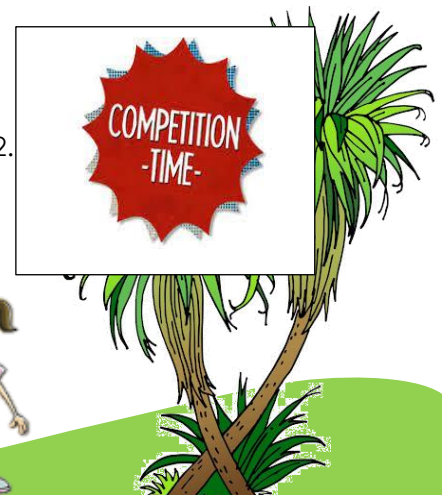
ART COMPETITION -TO DESIGN A PB4L POSTER

To design a poster that shows the Weber STAR values and the name of the school. It must be hand drawn on A4 paper (either landscape or portrait. can be a coloured or black and white design.

The STAR values and Weber School must be clearly visible.

The winning design will be framed in the office area, made into cards for visitors and displayed on our PB4L documents and signs for the whole of 2022.

Please hand in your entries to the office by 4th February 2022.



WHEELS WEEK

This week the students have had a great week on their wheels. We have had scooters, bikes, skateboards and skates, the students have had an awesome time. Luckily the wet weather stayed away when it was break time at the start of the week. Another great week of wheels !!

A big thank you to Rob and Charlie Kjestrup for building some ramps for everyone to use this week.



HELP WANTED

Do you know someone who is a handyman or a keen carpenter who would be keen to build something for the school? Next year as part of our PB4L work we would like to use a container like the photo below for our school 'caught being good' tokens - it would need to be approx 1 metre high wooden box, a perspex front and a hinged lid on the top. Please let the office know if you are able to help or need more details. Thank you.

OfficeMax
MySCHOOL

Got five minutes?

Your child's back to school class list is ready to shop now at myschool.co.nz or call us Mon to Fri, 8.30am - 5pm.

myschool.co.nz 0800 724 440

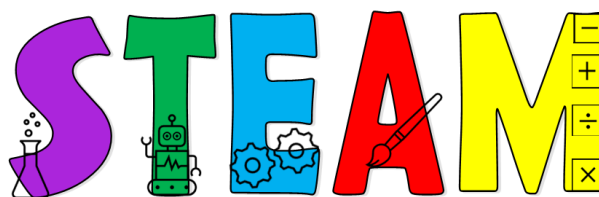
ORDER YOUR STATIONERY FOR 2022 NOW!!





We are taking enrolments for 2022. If your child/ren are going to be attending Weber School in the future, could you please let us know their names and date of birth asap?

06 3743809 or email
office@weber.school.nz



Register at Dannevirke Library from 13 December

The S.T.E.A.M. Into Summer holiday programme is for school aged students.

It runs for 5 weeks over the summer holidays with a break between Christmas and the library re-opening on 10 January 2022.

Week 1 13 – 17 December Theme -
Science

Week 2 20 – 23 December Theme -
Technology

Week 3 10 – 14 January Theme -
Engineering

Week 4 17-21 January Theme -
Arts

Week 5 24 – 28 January Theme -
Maths

There are 5 challenge cards. Bring or email a photo of your completed challenge to the library. Earn a sticker for your card. Your name will be entered in that week's prize draw.

If you complete all 5 challenges, your name will be entered in the Grand Prize Draw. Winner's name is drawn after the programme has finished.

If you complete any bonus activity cards you will be given an extra entry into that week's prize draw.

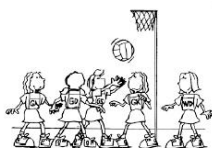
Dannevirke Netball Centre
Presents...



YEAR 5/6 FUNDAMENTAL SKILLS PROGRAMME, TERM 1, 2022

Do you want to get a head-start for the netball season?

This programme will run once a week (day 1RC) and cover the fundamentals of playing 7-a-side netball. This will include



- Passing
- Catching
- Attacking
- Defending
- Shooting
- Positions of Play
- Footwork

Please email dvkenetball@gmail.com to register interest for your child.
Please give name, school and school year level for 2022 so we can make contact in the new year.

Warmest regards
Lisa Anderson

