



# Greetings from Weber School!

*Striving for Success, Team Player, Active Learner, Respectful*

Phone: 06 374 3809

Email: [office@weber.school.nz](mailto:office@weber.school.nz)

Website: [www.weber.school.nz](http://www.weber.school.nz)

Facebook: [Weber School](https://www.facebook.com/WeberSchool)

Tena koutou kātoa Weber whanau,

Welcome to Term 4 2021! what a year it has been again - let's finish it on a high... I hope you all had a lovely holiday with your family. We start the term still operating under Alert Level 2 procedures, hand hygiene remains a priority. Please keep any students who are not well at home. There have been some updates over the holidays so please read the reminders in this newsletter carefully. Thank you for your ongoing support in keeping our students and our school community safe.

As a staff we are excited about the term ahead. In The first half of the term, we are focusing on literacy and numeracy combined with assessments for our reporting at the end of the year. We will also be practising for our school athletics day, unfortunately due to Covid restrictions Inter-School Athletics has been cancelled.

Our inquiry lens this term is looking at Digital Technology and integrating this into all areas of the curriculum, learning new digital skills as well as using new tools.

As we are now in Term 4 a reminder that all children are required to wear a named sunhat (ideally left at school) and named sandals. On those occasions when the weather is wet and cold students can wear closed black shoes.

Have a lovely week everyone and welcome back.

## TERM 4 DATES:

**25th Oct**- Labour day  
NO SCHOOL

**30th Oct** – DHS  
Enrolment Day

**5th Nov** - Virtual Pet  
day

**11 Nov** - School  
Athletics day

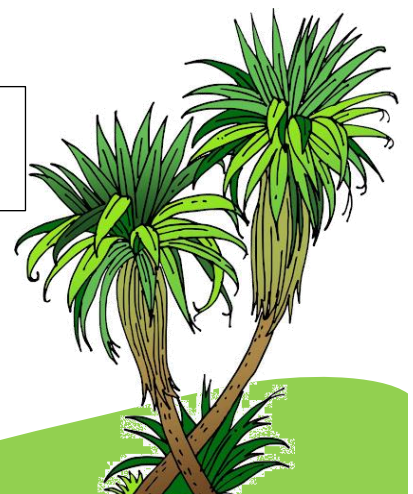
**19 Nov** - TOD No  
students on site

**10 Dec**- End of year  
reports go home

**15 Dec**- Last day of  
Term 4



**PB4L Focus:** We are starting the term looking at 'Sportsmanship and being a good sport' to link in with our upcoming Athletics day and the school's STAR values.



## Bus Arrangements

Please notify the office of any changes to bus arrangements this term, as this makes our job much more streamlined at the end of the school day. Thank you.

## Kai Warmers

There are no kai warmers this term.

## Newsletters

This term newsletters will be fortnightly.

## **LEVEL 2 REMINDERS**

### Attendance and Absences

Now more than ever it is important that we are informed early if your child is unwell and will not be at school. This can be done through our Skool loop app, email, or a phone call to the office. Please do not contact teachers.

If for some reason your child becomes unwell at school, they will need to be collected immediately. DO NOT send your child to school if they are unwell. Please contact the school office if you need to update emergency contact information.

### Hygiene

All classrooms are provided with hand sanitiser, paper towels, wipes and hand soap in toilets. Children will sanitise on entering and leaving the classroom. Frequently touched surfaces will be disinfected during the day and toilets will be given extra cleans during the day.

### Drop off and pick up

Mrs Anderson will be at the school gate by the hall to ensure everyone sanitises on entry. Pick up/drop offs need to occur outside school grounds and parents must wear a mask and maintain a 2m distance from each other.

### Entry to School



If possible, parents are asked to remain off-site. If parents or visitors enter the school grounds they **must report to the office, sign into our visitor register and wear a mask.** We are operating a 'one in one out' system in the office so please bear with us if the office is busy.

### Water Fountains

Water fountains will be unavailable so please ensure your child has a named water bottle.



### Face Masks on school transport

Providing face coverings is the responsibility of individuals and caregivers. Any student who is unwell should not travel on a school bus.

**Students aged 12 and over** Face coverings are required to be worn while on school transport (both Ministry and regional council-operated services) under ALL alert levels. This includes daily and technology transport services. Students aged under 12 are not required to wear face coverings on school transport. However, all students are encouraged to wear face coverings on school transport.



## Pet Day announcement - We will be going virtual for 2021.



**Friday 5th November 2021 Virtual Pet Day:** With our ever-evolving Covid climate and the updated Level 2 restrictions on events we are wanting to ensure every student still has the opportunity to present their pet for our Pet Day. SO THIS YEAR WE ARE GOING VIRTUAL..... !!

The challenges we have in regards to having large numbers of people on-site at school mean we are changing what Pet Day will look like for 2021. We have considered many different options and feel that we have come up with the solution that gives every student the opportunity to show off their pet/animal. I appreciate the time and effort our students have put into caring and rearing their animals. Some of the usual events are not included this year due to the nature of being virtual.

**For 2021 we will be asking for each entry to provide a short video clip showing their animal off.** There will be no parents or animals on site this year. The video clip will then be submitted to the office [office@weber.school.nz](mailto:office@weber.school.nz). We will still be judging the animals, it will just be through what we can see and hear in the video. There will be junior, middle and senior sections along with first, second, third and highly commended. The judging will take place on Friday 5th November. Ribbons will still be awarded and it would be great to see photos after the event of the winning entries with their ribbons. The video clips will then be on the school website for the school community to see.

**Please make sure when you email your entry that you clearly label in the subject line what areas you would like it to be submitted for.**

**Videos will be no more than 4 minutes long and MUST be submitted by 4pm Wednesday 3rd November.** If you need support with a device to record the presentation please come in and see us.

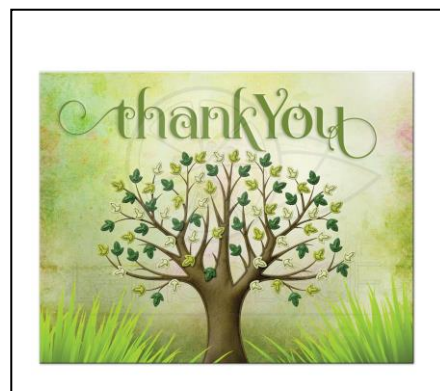
Areas for judging-

- Lamb leading
- Dog leading
- Other pet leading
- Dog care/attention
- Lamb care/attention
- Calf care/attention
- Best overall dressed up pet and owner – be creative!
- NEW EVENT !!!- create an obstacle course for any pet/animal to complete



### Trees for schools project

A huge thank you to New Zealand Forest Service who are sponsoring the 'Trees for schools' project. At the very end of term three we took delivery of some native and non native trees for our school grounds. Some seniors in Room 3 have been tasked to find locations around the grounds that best suit these trees. We look forward to seeing them be planted.



### Dannevirke High School Enrolments for 2022

Dannevirke High School are open for a day for you to enrol your children for 2022. This is happening 30 October, please phone the high school on 3748302 to make an appointment for this.



### Apple Stickers

This is the last shout out for apple stickers! Could you please send these to the school office so we can order some much needed sports gear for our students.

Warm regards

**Lisa Anderson**  
Principal

