

# Greetings from Weber School!

*Striving for Success, Team Player, Active Learner, Respect*

Phone: 06 374 3809  
Email: [office@weber.school.nz](mailto:office@weber.school.nz)  
Website: [www.weber.school.nz](http://www.weber.school.nz)  
Facebook: [Weber School](https://www.facebook.com/Weber.School)

**Mā tini mā mano ka rapa te whai  
Many hands make light work. Unity is strength.**

**Good afternoon...Ahiahi mārie!**

## PRINCIPAL'S VISIT

Mrs Anderson was warmly welcomed to Weber School by a well organised assembly put on by the junior room. She was treated to waiata, children telling her what they love about Weber School and the presentation of certificates for the week.

Mrs Anderson was very grateful that the students had presented the assembly so enthusiastically and had welcomed her in such a lovely way.

## INTERSCHOOL CROSS COUNTRY 16TH JUNE

Postponement time will be 7.30-8am via Facebook and Skool Loop.  
Postponement date 23rd June.

### The Day's Plan:

9.30 visiting schools arrive. Weber students arrive at usual school time.

9.40 briefing for marshalls.

10.00 walk the course.

11.00 first race begins and each race will leave approx 20 mins apart.

Students to eat lunch through the day - no set time.

2.30 town competitors and supporters leave if not already done so.

The following students are representing Weber:

Eva Arnold, Ruby Blyth, Lara Johnson, Cooper Halliwell, Patrick Roberston, Monty Morrison, Lola McGhie, Ruby McKenzie, Himemoana Whakataka-Tutauha, Bella-Rose Harold, Patch Leipst, Charlie James, Henry Leipst, Charlie Kjestrup, Tom James and Fergus Prouting. We wish them all the very best for their races and know they

## IMPORTANT DATES

Term

Two

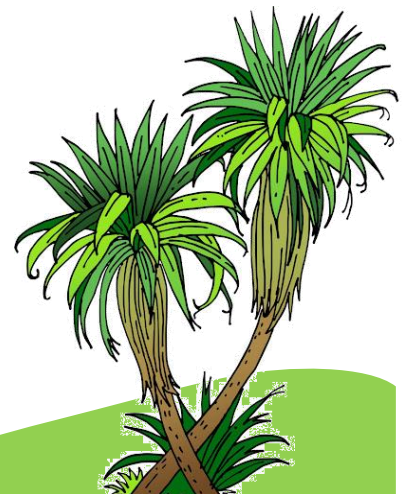
**Mondays  
Technology Yrs  
7 & 8**

**Tuesdays  
Guitar**

**Wednesdays  
RE every 2<sup>nd</sup>  
week**

**Fridays  
Library  
Kapa Haka**

**Interschool  
Cross Country  
16 June**



will compete with grit and determination and represent the school with the STAR values.

Sports uniforms have been supplied to the competitors which they will change into once they arrive at school at the beginning of the school day.

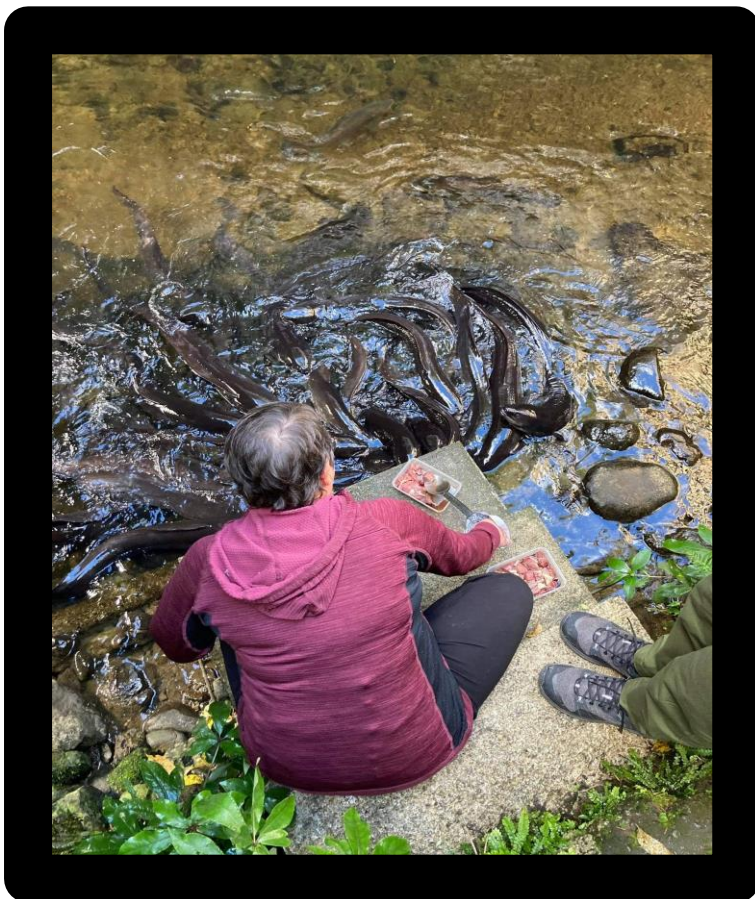
At the end of the day they are to change back into their school uniform and leave their sports uniform at the school office. The kit will be laundered together.

**Entry to the event** - via the gate into the lane next to the schoolhouse. Follow the signs. Walk across the fields parallel to the start line. No-one is to walk on the side of the road. Each school will be permitted one vehicle in the gate opposite the hall carpark to transport their school tent and equipment for set up. The gate will be closed to all other traffic.

**Food** - We will have a sausage sizzle and drinks stall as well as a tent selling coffee, tea and cake. **Cash only.**  
Proceeds will go towards senior camp, kapa haka uniforms and literacy books.

### PUKAHA MT BRUCE TRIP

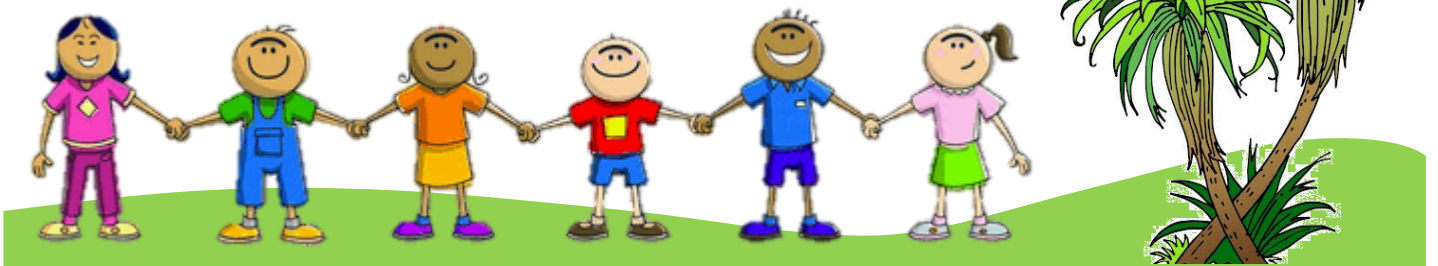
The middle and junior rooms visited Pukaha Mt Bruce last Thursday. Thank you to all the wonderful parents who gave up their time to transport the children and spend the day with them learning about our native birds and the conservation work that is done at Mt Bruce.



The highlight was feeding the tuna / longfin eels; look at the size and sheer number of them as they wait for their meat. These fish are endemic to Aotearoa. They hatch on the seas of Tonga and float here on sea currents before swimming inland along our freshwater streams where they then spend most of their lives.

They are truly remarkable!

Here's Mrs Phelps apportioning out the steak for these hungry creatures. No wonder they are so big with a diet like this!





#### PB4L

The Positive Behaviour For Learning expectation remains until the end of term.

It is **to hold on to what we want to say, put our hands up and wait to be asked.**

Changing the behaviour around calling out allows more students to think of the answer and contribute, plus it fosters a more positive and respectful classroom.

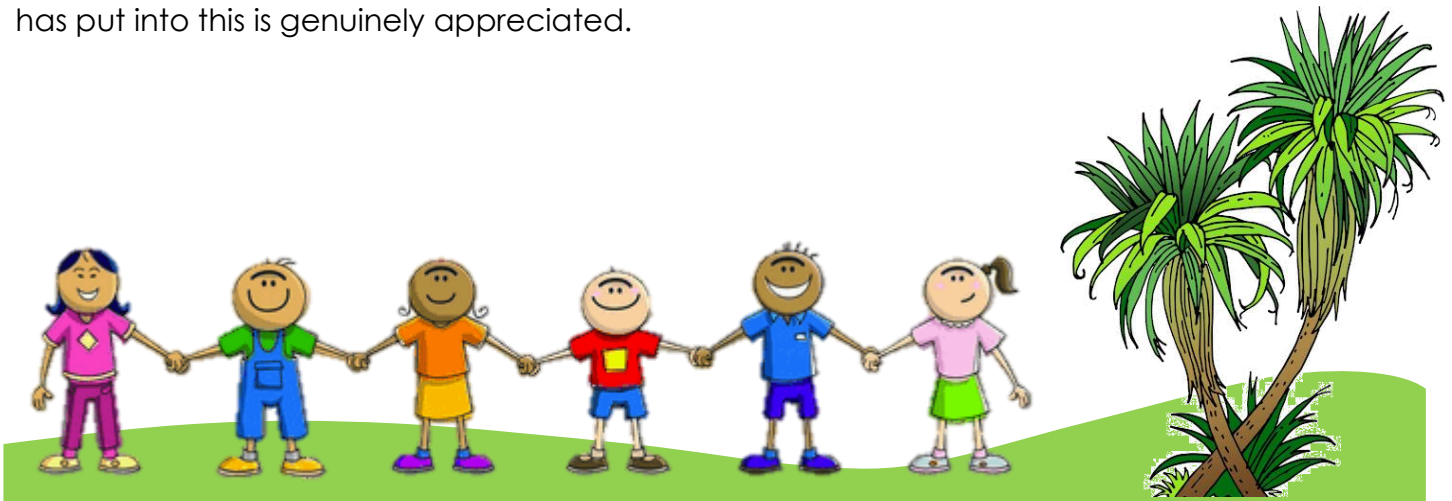
Teachers are adding another layer of expected behaviour this week in the classroom and that is managing ourselves: avoid being distracted or being the distractor.

#### SAUSAGE SIZZLE

Orders in by Thursday lunchtime for Friday please.

#### FUNDRAISING

An enormous thank you goes to Mrs Kjestrup for her unwavering organisation of the crutching day last Friday. Fundraising is a difficult task with many ups and downs (weather and people's availability) and all the hard work Mrs Kjestrup has put into this is genuinely appreciated.





Thank you also to the crutchers on the end of the handpieces and rousies on the end of the brooms. Weber School students are so fortunate to have parents and members of the community giving up their time to help support resourcing the school which benefits our students' learning.

I have heard that two of the crutchers are not Weber parents yet so a big thank you to them!

***Mā tini mā mano ka rapa te whai - many hands make light work and unity is strength.***

This is certainly the feeling for this week as we host the interschool cross country with 184 competitors plus supporters. It will be a huge day for Weber School and I am sure all our competitors and supporters will be wonderful hosts to our manuhiri / visitors.

Kia pai to hararei, have a good week.

Chrissina Loader  
Acting Principal



**Striving for success**



**Team Player**



**Active Learner**



**Respectful**

